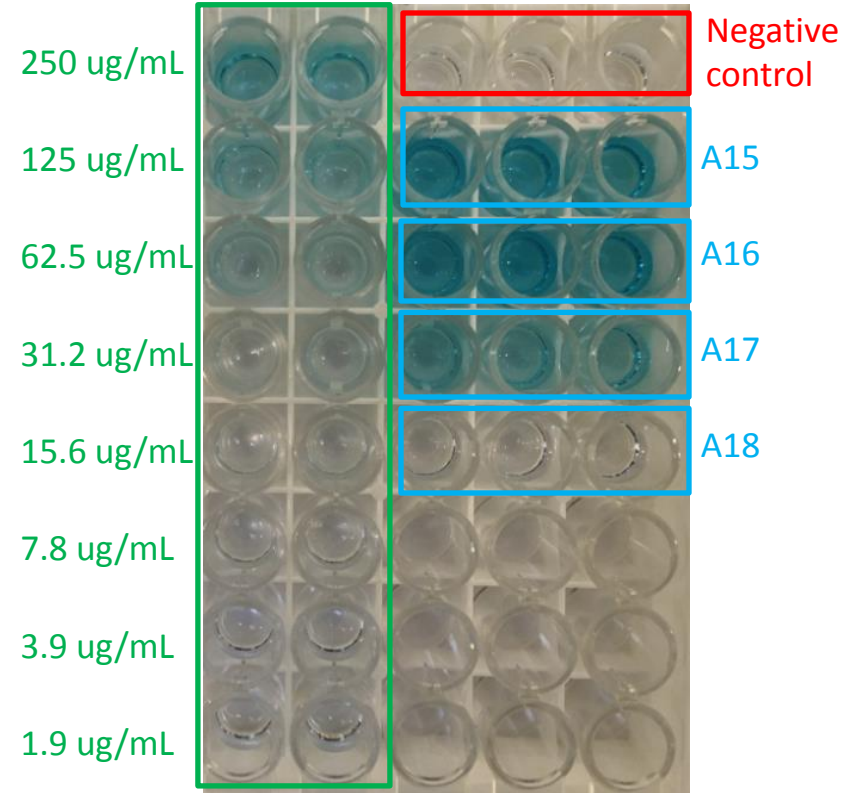
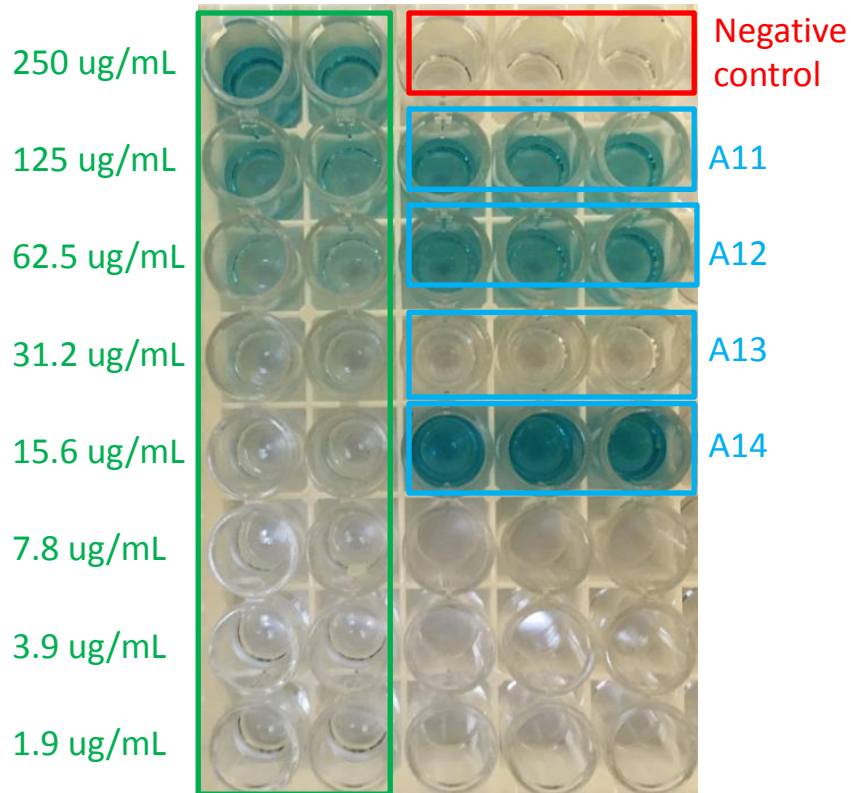


Influenza Outbreak Investigation Kit
ELISA Data
122120

Patient Samples A 11-18

ELISA and Plate Layout

Standard Curve
(Positive Controls)
1:2 dilutions



Patient Samples A11-A18

ELISA Plate Reader Data (650 nm)

Standard Curve
(Positive Controls)
1:2 dilutions

OD reading

250 ug/mL

125 ug/mL

62.5 ug/mL

31.2 ug/mL

15.6 ug/mL

7.8 ug/mL

3.9 ug/mL

1.9 ug/mL

Un0001	Un0009	Blank1	Blank1	Blank1
1.0135	0.7917	0.0402	0.0403	0.0415
Un0002	Un0010	Un0017	Un0021	Un0025
0.5492	0.4699	0.8709	0.7574	0.7334
Un0003	Un0011	Un0018	Un0022	Un0026
0.2798	0.2642	0.8009	0.7562	0.8715
Un0004	Un0012	Un0019	Un0023	Un0027
0.1547	0.1559	0.0396	0.0397	0.0418
Un0005	Un0013	Un0020	Un0024	Un0028
0.0921	0.0920	1.2538	1.4009	1.4129
Un0006	Un0014			
0.0724	0.0716			
Un0007	Un0015			
0.0574	0.0542			
Un0008	Un0016			
0.0484	0.0462			

Negative
control

A11

A12

A13

A14

Un0029	Un0030	Blank1	Blank1	Blank1
0.5735	0.5303	0.0410	0.0408	0.0424
Un0031	Un0032	Un0045	Un0049	Un0053
0.3547	0.3294	1.0309	0.9663	0.9043
Un0033	Un0034	Un0046	Un0050	Un0054
0.2142	0.1734	0.9179	1.0557	0.9054
Un0035	Un0036	Un0047	Un0051	Un0055
0.1043	0.1252	0.5049	0.4751	0.4900
Un0037	Un0038	Un0048	Un0052	Un0056
0.0811	0.0777	0.0412	0.0400	0.0420
Un0039	Un0040			
0.0609	0.0598			
Un0041	Un0042			
0.0506	0.0510			
Un0043	Un0044			
0.0456	0.0453			

Negative
control

A15

A16

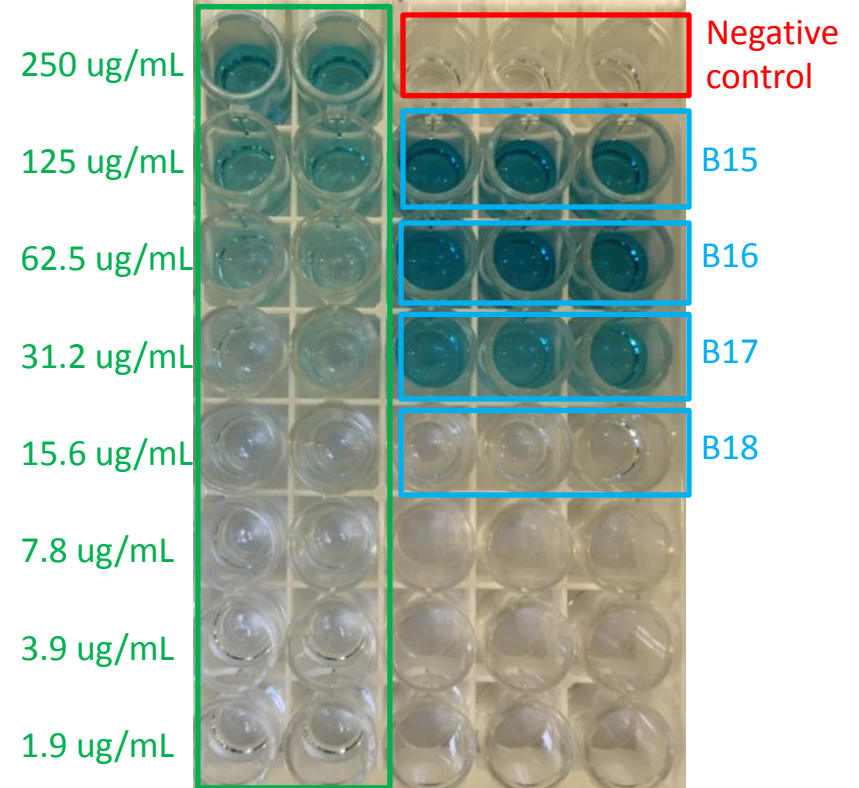
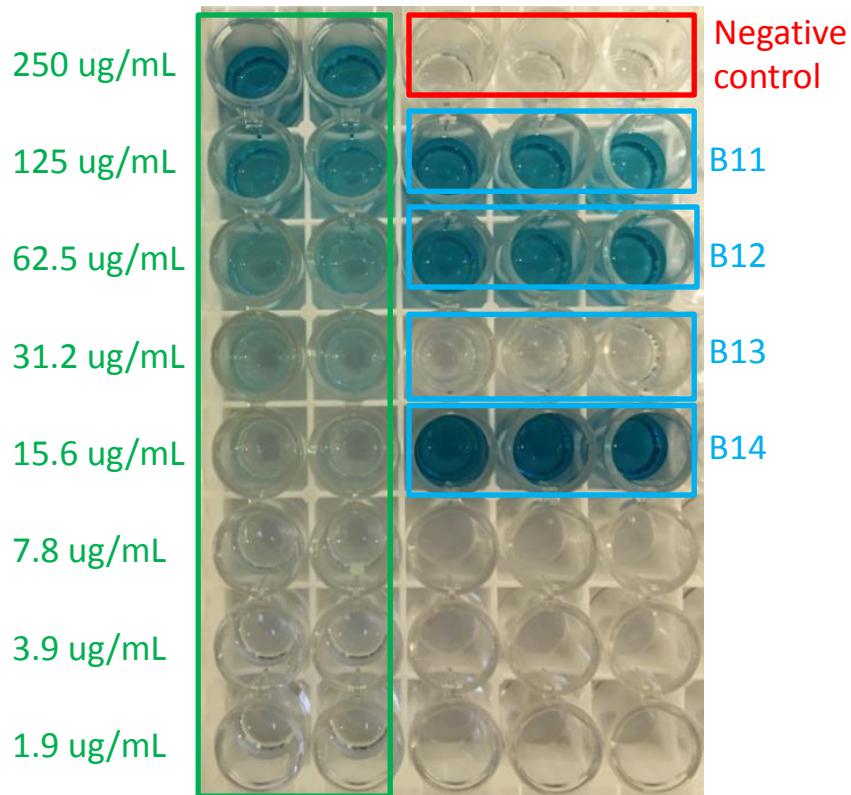
A17

A18

Patient Samples B 11-18

ELISA and Plate Layout

Standard Curve
(Positive Controls)
1:2 dilutions



Patient Samples B11-B18

ELISA Plate Reader Data (650 nm)

Standard Curve
(Positive Controls)
1:2 dilutions

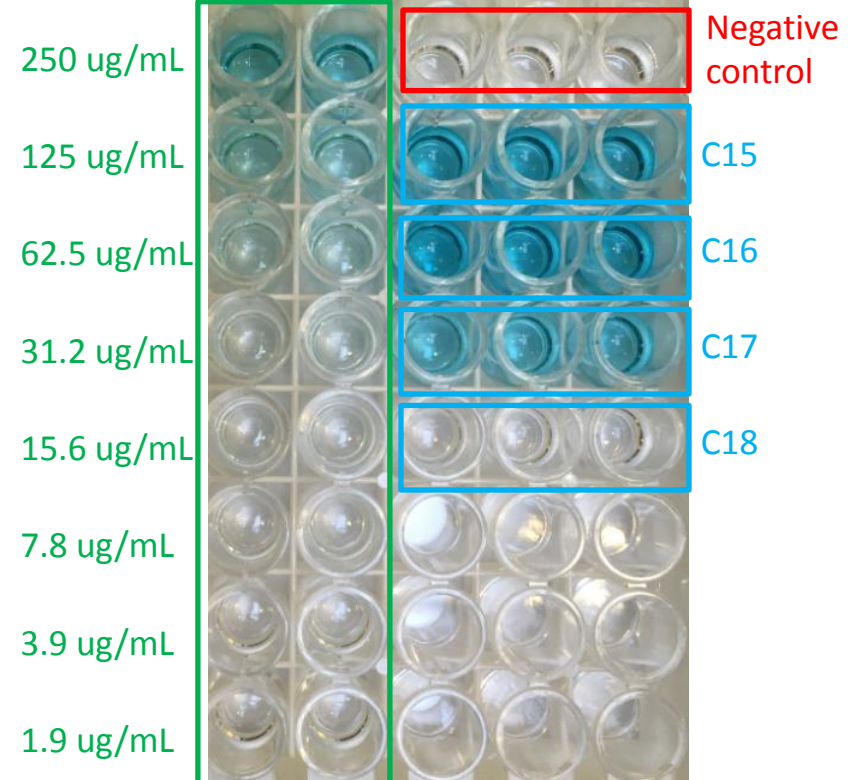
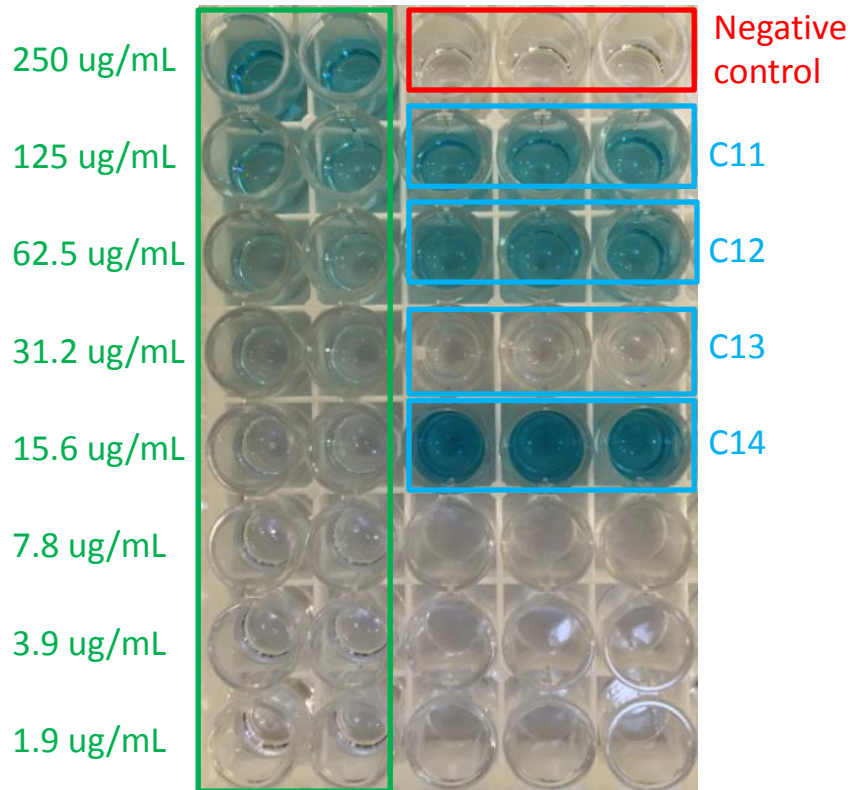
OD reading

250 ug/mL	Un0001 0.6612	Un0009 0.6027	Blank1 0.0390	Blank1 0.0383	Blank1 0.0394	Negative control
125 ug/mL	Un0002 0.3532	Un0010 0.4078	Un0017 0.6109	Un0021 0.6169	Un0025 0.5882	B11
62.5 ug/mL	Un0003 0.1908	Un0011 0.2049	Un0018 0.5867	Un0022 0.6200	Un0026 0.6443	B12
31.2 ug/mL	Un0004 0.1226	Un0012 0.1217	Un0019 0.0381	Un0023 0.0385	Un0027 0.0392	B13
15.6 ug/mL	Un0005 0.0801	Un0013 0.0804	Un0020 1.0477	Un0024 1.0411	Un0028 1.0389	B14
7.8 ug/mL	Un0006 0.0587	Un0014 0.0640				
3.9 ug/mL	Un0007 0.0480	Un0015 0.0512				
1.9 ug/mL	Un0008 0.0443	Un0016 0.0426				
	Un0029 0.5133	Un0030 0.4880	Blank1 0.0399	Blank1 0.0402	Blank1 0.0385	Negative control
	Un0031 0.2995	Un0032 0.2731	Un0045 0.7854	Un0049 0.7960	Un0053 0.7709	B15
	Un0033 0.1661	Un0034 0.1705	Un0046 0.8836	Un0050 0.8233	Un0054 0.8298	B16
	Un0035 0.1038	Un0036 0.1034	Un0047 0.4770	Un0051 0.4960	Un0055 0.5406	B17
	Un0037 0.0749	Un0038 0.0729	Un0048 0.0385	Un0052 0.0398	Un0056 0.0397	B18
	Un0039 0.0572	Un0040 0.0573				
	Un0041 0.0468	Un0042 0.0502				
	Un0043 0.0429	Un0044 0.0425				

Patient Samples C 11-18

ELISA and Plate Layout

Standard Curve
(Positive Controls)
1:2 dilutions



Patient Samples C11-C18

ELISA Plate Reader Data (650 nm)

Standard Curve
(Positive Controls)
1:2 dilutions

OD reading

250 ug/mL

Un0001	Un0009	Blank1	Blank1	Blank1
0.7841	0.7152	0.0385	0.0388	0.0377
Un0002	Un0010	Un0017	Un0021	Un0025
0.4159	0.4864	0.7255	0.7290	0.6821
Un0003	Un0011	Un0018	Un0022	Un0026
0.2227	0.2403	0.6940	0.7314	0.7506
Un0004	Un0012	Un0019	Un0023	Un0027
0.1400	0.1393	0.0383	0.0389	0.0379
Un0005	Un0013	Un0020	Un0024	Un0028
0.0900	0.0901	1.2230	1.2014	1.1887
Un0006	Un0014			
0.0631	0.0689			
Un0007	Un0015			
0.0501	0.0541			
Un0008	Un0016			
0.0452	0.0432			

Negative
control

C11

C12

C13

C14

Un0029	Un0030	Blank1	Blank1	Blank1
0.6011	0.5726	0.0395	0.0401	0.0383
Un0031	Un0032	Un0045	Un0049	Un0053
0.3499	0.3175	0.9151	0.9293	0.9056
Un0033	Un0034	Un0046	Un0050	Un0054
0.1921	0.1955	1.0387	0.9648	0.9838
Un0035	Un0036	Un0047	Un0051	Un0055
0.1182	0.1170	0.5592	0.5812	0.6363
Un0037	Un0038	Un0048	Un0052	Un0056
0.0825	0.0803	0.0387	0.0395	0.0397
Un0039	Un0040			
0.0611	0.0624			
Un0041	Un0042			
0.0486	0.0529			
Un0043	Un0044			
0.0431	0.0429			

Negative
control

C15

C16

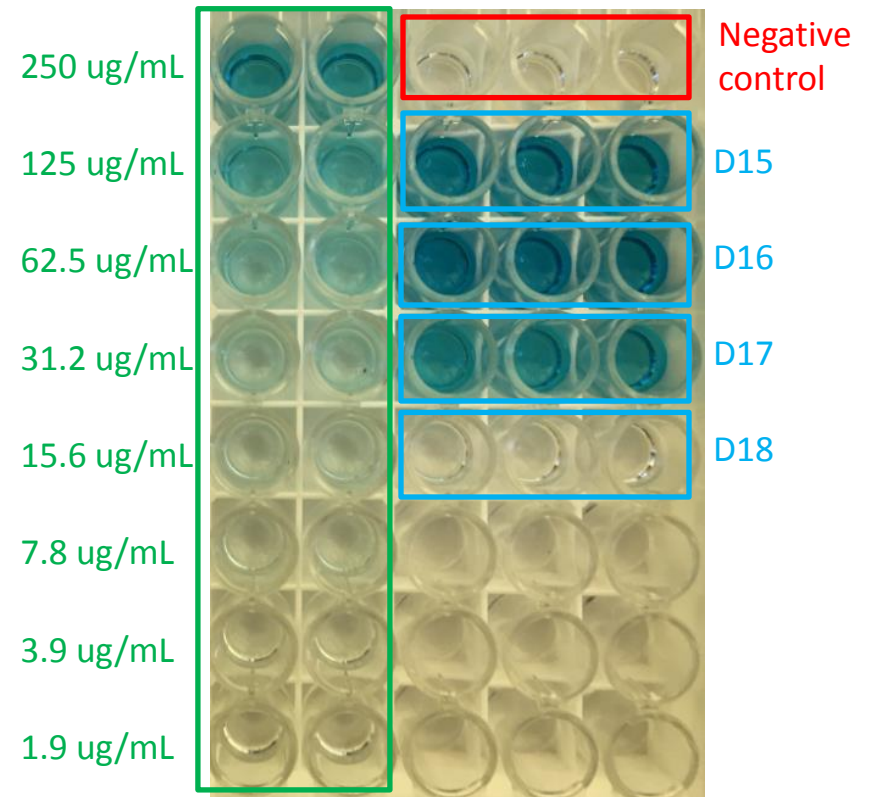
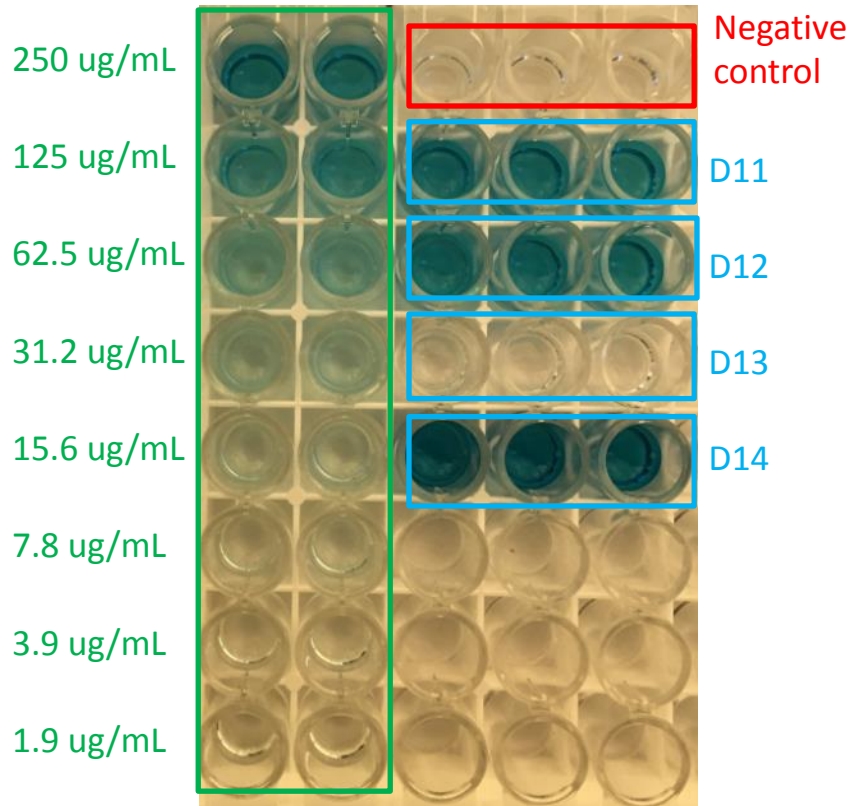
C17

C18

Patient Samples D 11-18

ELISA and Plate Layout

Standard Curve
(Positive Controls)
1:2 dilutions



Patient Samples D11-D18

ELISA Plate Reader Data (650 nm)

Standard Curve
(Positive Controls)
1:2 dilutions

OD reading

250 ug/mL

Un0001	Un0009	Blank1	Blank1	Blank1
0.9984	0.9283	0.0398	0.0399	0.0399
Un0002	Un0010	Un0017	Un0021	Un0025
0.5341	0.6266	0.9290	0.9524	0.9021
Un0003	Un0011	Un0018	Un0022	Un0026
0.2856	0.3054	0.8878	0.9367	0.9647
Un0004	Un0012	Un0019	Un0023	Un0027
0.1768	0.1745	0.0396	0.0398	0.0396
Un0005	Un0013	Un0020	Un0024	Un0028
0.1090	0.1091	1.5528	1.5270	1.4798
Un0006	Un0014			
0.0733	0.0805			
Un0007	Un0015			
0.0559	0.0593			
Un0008	Un0016			
0.0487	0.0471			

Negative
control

D11

D12

D13

D14

Un0029	Un0030	Blank1	Blank1	Blank1
0.8007	0.7638	0.0407	0.0409	0.0407
Un0031	Un0032	Un0045	Un0049	Un0053
0.4742	0.4335	1.2445	1.2481	1.1952
Un0033	Un0034	Un0046	Un0050	Un0054
0.2507	0.2616	1.4008	1.2894	1.2956
Un0035	Un0036	Un0047	Un0051	Un0055
0.1455	0.1489	0.7468	0.7772	0.8301
Un0037	Un0038	Un0048	Un0052	Un0056
0.0981	0.0952	0.0396	0.0402	0.0402
Un0039	Un0040			
0.0689	0.0713			
Un0041	Un0042			
0.0524	0.0570			
Un0043	Un0044			
0.0457	0.0461			

Negative
control

D15

D16

D17

D18